

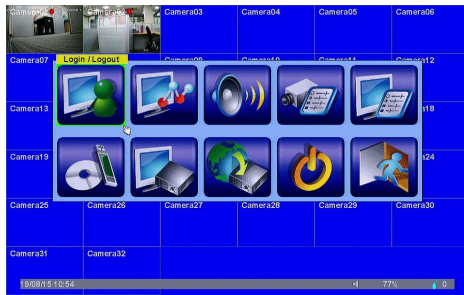
Quick Operation

1. Login/Logout

2. System Status
3. Display
4. System Setup
- 4.1 Pre-Camera
- 4.1.1 IPCam Setup
- 4.2 Camera
- 4.3 HDD
- 4.4 Password
- 4.5 System
- 4.6 Network
- 4.7 Factory Defaults

To login/logout the system, press **MENU** in split-window display to call up Menu display, and then press **ENTER** to enter Login/Logout display as shown.

Factory-preset login name: aa password: 11



NOTE :

In case the user forgets the user name and password for all levels of administrator, contact your local dealer or business process engineering.

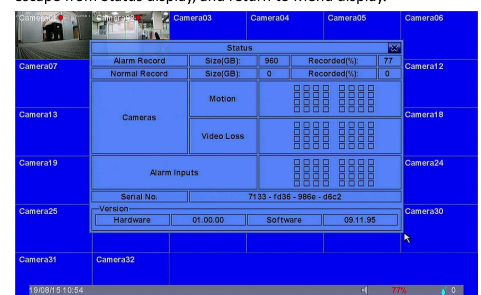
1

Quick Operation

1. Login/Logout

2. System Status
3. Display
4. System Setup
- 4.1 Pre-Camera
- 4.1.1 IPCam Setup
- 4.2 Camera
- 4.3 HDD
- 4.4 Password
- 4.5 System
- 4.6 Network
- 4.7 Factory Defaults

In Menu display, press **▲▼◀▶** to change the highlighted option to **Status**, and then press **ENTER** to call up Status display as shown. Status display includes Alarm Recording Status, Normal Recording Status, Camera Status, Alarm Input Status, Product Serial Number, and Product Version Number. Press **ESC (Mouse: Right Click)** to escape from Status display, and return to Menu display.



NOTE :

In each state block, displaying white representatives corresponding situation occurs, sequentially left to right, top to bottom for the channel belongs, can distinguish these from the box immediately which channels are triggered.

2

Quick Operation

1. Login/Logout

2. System Status
3. Display
4. System Setup
- 4.1 Pre-Camera
- 4.1.1 IPCam Setup
- 4.2 Camera
- 4.3 HDD
- 4.4 Password
- 4.5 System
- 4.6 Network
- 4.7 Factory Defaults

In Menu display, press **▲▼◀▶** to change the highlighted option to **Display**, and then press **ENTER** to call up Display dialog as shown. There are several items which can be adjusted. The operations are as below:

+/- Press these buttons to adjust the selected item.
MENU/ESC Press this button to escape from this screen.
Press ENTER to exit and save, **ESC** to exit without saving.



NOTE :

The recommended screen size is 17 Inches LCD or above. If use too small screen, it will not be able to display the screen.

3

Quick Operation

1. Login/Logout

2. System Status
3. Display
4. System Setup
- 4.1 Pre-Camera
- 4.1.1 IPCam Setup
- 4.2 Camera
- 4.3 HDD
- 4.4 Password
- 4.5 System
- 4.6 Network
- 4.7 Factory Defaults

In Menu display, press **▲▼◀▶** to change the highlighted option to **Setup**, and then press **ENTER** to call up Setup Menu display as shown.



NOTE :

To enter Setup Menu display of the system, please login as Administrator first.

4

Quick Operation

1. Login/Logout

2. System Status
3. Display
4. System Setup
- 4.1 Pre-Camera
- 4.1.1 IPCam Setup
- 4.2 Camera
- 4.3 HDD
- 4.4 Password
- 4.5 System
- 4.6 Network
- 4.7 Factory Defaults

There are IP cameras can be connected. The **Pre-Camera Setup** allows the administrator to open IPCam settings.



NOTE :

In accordance with different models, different resolutions are adjustable.

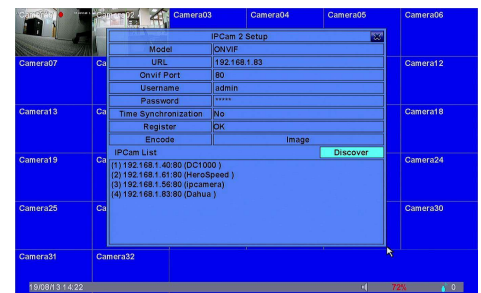
5

Quick Operation

1. Login/Logout

2. System Status
3. Display
4. System Setup
- 4.1 Pre-Camera
- 4.1.1 IPCam Setup
- 4.2 Camera
- 4.3 HDD
- 4.4 Password
- 4.5 System
- 4.6 Network
- 4.7 Factory Defaults

The IPCam Setup allows the administrator to adjust the resolution and frame rate of main stream and sub stream in Encode setting.



NOTE :

From the IPCam List that Discovered, double-click the left mouse button to add a IP camera. After changing the Encode settings, press **Apply** to set the settings to IP camera. Press **Register** to connect to the IP camera.

6

Quick Operation

1. Login/Logout

2. System Status
3. Display
4. System Setup
- 4.1 Pre-Camera
- 4.1.1 IPCam Setup
- 4.2 Camera
- 4.3 HDD
- 4.4 Password
- 4.5 System
- 4.6 Network
- 4.7 Factory Defaults

The Camera Setup allows the administrator to define the event attributes for each camera.



NOTE :

The higher record quality and IPS, the fewer number of days video. The record quality and IPS can be set in Encode settings of 4.1.1.

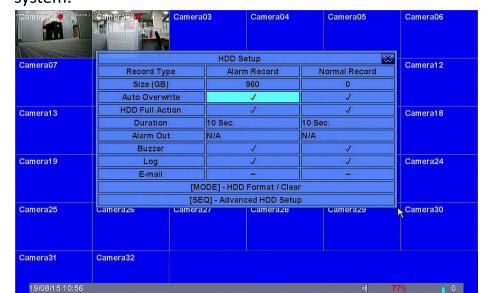
7

Quick Operation

1. Login/Logout

2. System Status
3. Display
4. System Setup
- 4.1 Pre-Camera
- 4.1.1 IPCam Setup
- 4.2 Camera
- 4.3 HDD
- 4.4 Password
- 4.5 System
- 4.6 Network
- 4.7 Factory Defaults

The HDD Setup allows the administrator to format/clear each HDD, set Alarm Record size and Normal Record size of each HDD, and define the behaviors for Alarm Record and Normal Record if it reaches the end of the last HDD in the system.



NOTE :

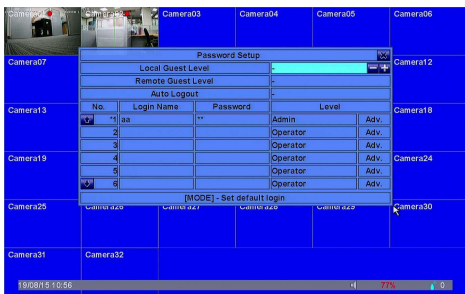
It can sent email notification while hdd failure.

8

Quick Operation

The Password Setup allows the administrator to add new users, delete existing ones, and/or modify the user's name, password, and/or level.

1. Login/Logout
2. System Status
3. Display
4. System Setup
 - 4.1 Pre-Camera
 - 4.2 Camera
 - 4.3 HDD
 - 4.4 Password**
 - 4.5 System
 - 4.6 Network
 - 4.7 Factory Defaults



NOTE :
The default guest level are "-" (no), press +/- buttons to change the level.

Quick Operation

The System Setup allows the administrator to set the system time, time zone, time synchronization, language, etc.

1. Login/Logout
2. System Status
3. Display
4. System Setup
 - 4.1 Pre-Camera
 - 4.2 Camera
 - 4.3 HDD
 - 4.4 Password
 - 4.5 System**
 - 4.6 Network
 - 4.7 Factory Defaults

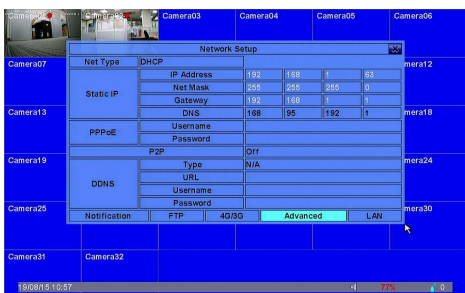


NOTE :
If connected to the Internet, set time synchronized with TSP Server, the system will try to do time synchronization with the specified TSP server at the system preset interval.

Quick Operation

The Network Setup allows the administrator to setup all Ethernet network related parameters, such as DHCP, PPPoE and Static IP.

1. Login/Logout
2. System Status
3. Display
4. System Setup
 - 4.1 Pre-Camera
 - 4.2 Camera
 - 4.3 HDD
 - 4.4 Password
 - 4.5 System
 - 4.6 Network**
 - 4.7 Factory Defaults



Factory Defaults, it will reset all the settings to factory default values.

NOTE :
Connection Account Settings questions, please contact your local network carriers.

Search Operation

There are different ways to search the recorded video/audio for playback: Search by time, Search by event, Search archived files and POS search.

1. Search By Time
2. Search By Event
3. Search Archive Files
4. POS Search
5. Exit

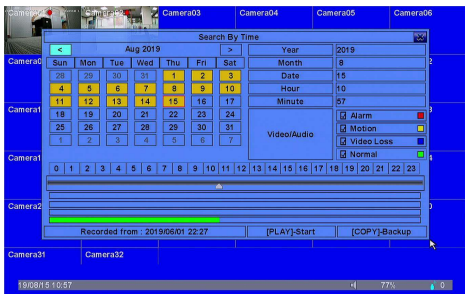


NOTE :
During playback, it will keep recording.

Search Operation

Time Search: You can select the year, month, day, hour, and minute to playback. You can also check whether the alarm, motion, video loss or normal according to the time index below.

- 1. Search By Time**
2. Search By Event
3. Search Archive Files
4. POS Search
5. Exit

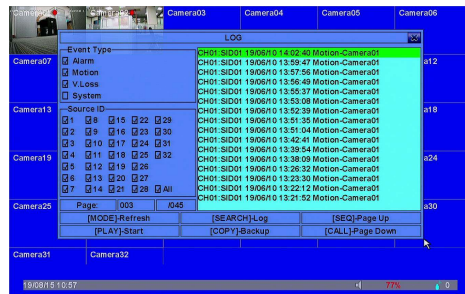


NOTE :
After the time is selected, you can choose to play or back up directly.

Search Operation

There are four different types of event logs, including Alarm, Motion, Video Loss, and System.

1. Search By Time
- 2. Search By Event**
3. Search Archive Files
4. POS Search
5. Exit

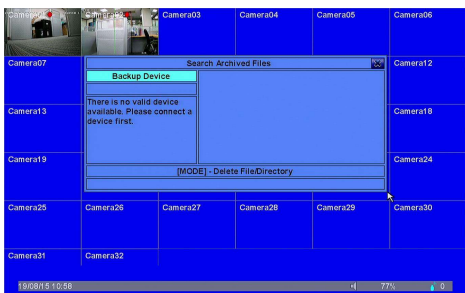


NOTE :
Event logs record all user action records.

Search Operation

Search Archive Files: search for the archived files in the selected disk storage for easy operation.

1. Search By Time
2. Search By Event
- 3. Search Archive Files**
4. POS Search
5. Exit

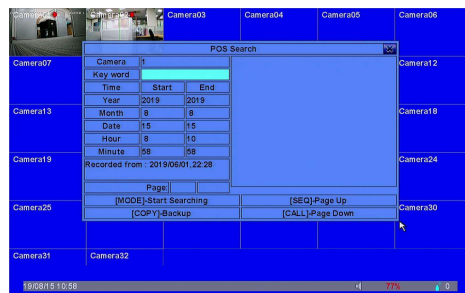


NOTE :
When user back up archive files, the machine will also generate batch files for each camera. User can run batch files in PC to automatically replay the corresponding backup files.

Search Operation

POS search: you can enter key words to search POS video data and do simple operations.

1. Search By Time
2. Search By Event
3. Search Archive Files
- 4. POS Search**
5. Exit



NOTE :
POS can be set in the RS-232/485/IR settings.